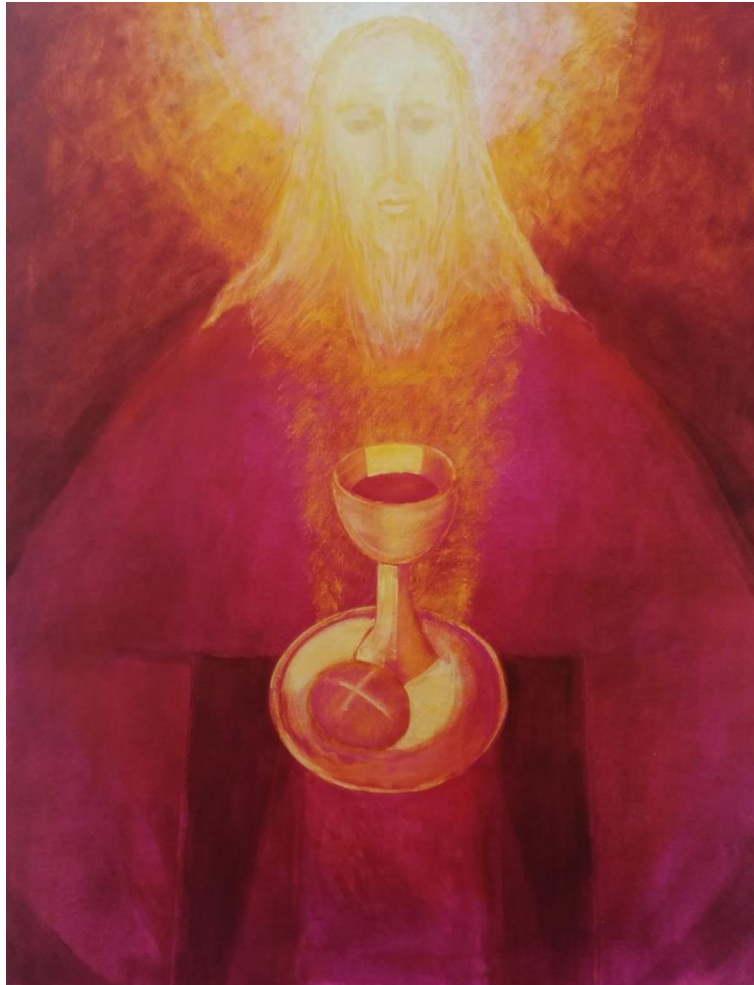


# The Christian Community Stourbridge

*Movement for Religious Renewal*

Passiontide to Whitsun 2019



Melchizedek

Ninetta Sombart 1925-2019

*One of the motives from the life of Ninetta Sombart who painted not only our altar picture but also the ones in Buckfastleigh and Stroud:*

*'Lies make you invisible to the spiritual world; your angel becomes powerless and you stand there without him'*

*From her friend, the philosopher and conductor Sergiu Celibidache*

*She said herself about her paintings which she never signed:*

*'Not I have painted them; they were painted through me.'*

## *Regular Services*

Sundays	10.00	The Act of Consecration of Man
Tuesdays	8.00	The Act of Consecration of Man Except 11/6 at 10.00; no service on 18/6
Tuesdays	4.00 - 5.30	Religion Lesson, ages 8 and 9
Wednesdays	1.45 – 3.00	Religion Lesson, ages up to 8
	4.15 – 5.15	Religion Lesson 12 years
Thursdays	10.00	The Act of Consecration of Man
	11.00	Weekly Gospel Study on service days
Fridays	1.45 – 3.00	Religion Lesson, ages up to 8

The Sunday Service for Children will be held at 9.10 for 9.15 on 31/3; on Easter Sunday and Whitsun Sunday it will be at 11:10 for 11.15.  
The new family service will be held at 9:15 on 12/5 and 23/6.

## Passiontide

### *March 2019*

22 <sup>nd</sup> -24 <sup>th</sup>		<b>‘Using eye and hand to unearth the reality of rock’</b> A Workshop with <i>Rev. Roger Druitt</i> No special knowledge necessary.
Friday 22 <sup>nd</sup>	19.00	‘The rock in our hand’
Saturday 23 <sup>rd</sup>	9.00	The Act of Consecration of Man
	10.30	‘How it came to be’
	11.50	‘The mysteries of rock chemistry’
	13.00	Lunch
	14.30	‘Who are rocks?’
1 <sup>st</sup> Passion Tide Sunday	10.00	The Act of Consecration of Man
	11.30	’Redeeming the fallen nature of rock and the fallen nature of our physical body’

30<sup>th</sup>-31<sup>st</sup> March      Ordinations in Spring Valley, USA

Sunday 31 <sup>st</sup>	9.15	Children’s service
	15.00	<b>Concert with Stella Seaton-Sims (mezzo-soprano) and Michael Jones (piano)</b>

## *April*

Wednesday 3 <sup>rd</sup>	19.30	Elmfield choir spring concert
Sunday 7 <sup>th</sup>	11.30	<b>Exhibition opening</b> By <i>Jana Neumeister</i>
Saturday 13 <sup>th</sup>	17.00	Reading for the Dead

## **Holy Week**

Palm Sunday 14 <sup>th</sup>	15.00	<b>Palm Sunday festival in Ashfield</b>
Monday 15 <sup>th</sup>	10.00	The Act of Consecration of Man
	11.15	<b>‘The story of Job and the riddle of suffering’</b> Talk by <i>Erhard Keller</i>
Tuesday 16 <sup>th</sup>	10.00	The Act of Consecration of Man
	11.15	<b>‘The story of Tobias and healing in the OT’</b> Talk by <i>Siobhán Porter</i>
Wednesday 17 <sup>th</sup>	10.00	The Act of Consecration of Man
	11.15	<b>‘Christ’s battle with death’</b> Talk by <i>Erhard Keller</i>
Maundy Thursday	10.00	The Act of Consecration of Man
	11.15	<b>‘The healing medicine’</b> Talk by <i>Louise Madsen</i>
Good Friday 19 <sup>th</sup>	10.00	The Act of Consecration of Man
	15.00	<b>The last words from the cross</b>
Saturday 20 <sup>th</sup>	10.00	The Act of Consecration of Man
	11.30	<b>Easter Saturday play</b> (in the garden)

## **Easter**

Sunday 21 <sup>st</sup>	7.00	The Act of Consecration of Man
	10.00	The Act of Consecration of Man
	11.15	Children’s service followed by egg hunt
Saturday 27 <sup>th</sup>	9-12	Gardening morning
Sunday 28 <sup>th</sup>	11.30	<b>Community Forum</b>

## *May*

Sunday 5 <sup>th</sup>	11.30	<b>‘Isaac’</b> Talk by <i>Erhard Keller</i>
Saturday 11 <sup>th</sup>	17.00	Reading for the Dead

Sunday 12 <sup>th</sup>	9.15	<b>Family service</b>
	11.30	<b>'Jacob'</b> Talk by <i>Louise Madsen</i>
Sunday 19 <sup>th</sup>	11.30	<b>'The Twelve Tribes of Israel'</b> Talk by <i>Siobhán Porter</i>
Saturday 25 <sup>th</sup>	9-12	Gardening morning
	19.00	<b>'Being on the Threshold'</b> Talk and conversation - preparing the Sacrament of Confirmation by <i>Monika Knight</i>
Sunday 26 <sup>th</sup>	10.00	<b>Confirmation of Rosalyn Lewers and Bonita Cooke</b> Everyone welcome

## **Ascension**

Thursday 30 <sup>th</sup>	10.00	The Act of Consecration of Man
	11.15	<b>Ascension outing</b> to St. Mary's church in Enville with picnic lunch

## **June**

Sunday 2 <sup>nd</sup>	19.00	<b>'The Incarnation of the Logos'</b> Play performed by Glen Williamson
------------------------	-------	--

## **Whitsun**

Sunday 9 <sup>th</sup>	11.15	Children's service
	11.30	<b>Whitsun festival</b>
Monday 10 <sup>th</sup>	10.00	The Act of Consecration of Man
	11.15	<b>'Threefold money and the Trinity'</b> Talk by <i>Erhard Keller</i>
Tuesday 11 <sup>th</sup>	10.00	Die Menschenweihehandlung (in German)
	11.15	<b>'From disciple to apostle'</b> Talk by <i>Siobhán Porter</i>

## **Trinity**

Saturday 15 <sup>th</sup>	15.00	Children's play performance
Sunday 16 <sup>th</sup>	11.30	<b>'Joseph'</b> Talk by Rosie Phillpot

Saturday 22 <sup>nd</sup>	17.00	Reading for the Dead
Sunday 23 <sup>rd</sup>	11.30	<b>'Miscellany'</b>

Opening of exhibition by and with *Bob Knowles*

Looking forward:

7 July: Concert with Helen Barley (harp)

17 September: AGM of The Christian Community in GB

18-20 October: Consecration of the new church in Stroud and the Annual Meeting of The Christian Community in Britain

Dear Congregation

The **theme** for this programme continues with stories from the Old Testament following on from Abraham. We try to look at the stories in such a way that we can understand their evolutionary significance and see how these events in the past can be so understood that they can help us towards the huge task of renewing religious life.

Once again we are delighted to have been invited to Ashfield Gardens for a celebration on **Palm Sunday**, 14th April at 3pm. We will make Palm Sunday crosses and beat the bounds singing our songs. There will be egg painting, seed sowing, a poetry performance, and lots of time to talk and eat and hopefully enjoy some lovely weather. Please bring and share lots of lovely food.

On Easter Saturday (outside if possible) we will perform Dr König's **Easter Saturday play**: The meeting of Nicodemus and Joseph of Arimathea with the woman of Samaria- in that strange atmosphere of the day after Christ's crucifixion. It is well worth coming to see this play to feel into the mood of silent Saturday.

On **Easter Sunday** we will celebrate the Act of Consecration twice: at 7am for the sunrise and again at 10am. There will be a children's service at 11.15 and afterwards an Easter egg hunt for the children....if the Easter bunny remembers to come!

The story of Jesus' birth, childhood and youth will come to us on Ascension Sunday when the professional New York actor and storyteller **Glen Williamson** performs *The Incarnation of the Logos: An Epic Tale of Christ's Coming to Earth*. His play harmonizes the different accounts of Matthew and Luke and weaves the threads of many traditions into an intimate but also cosmic drama. This wondrous story begins with the messianic prophecies in the Temple in Jerusalem, weaves through many parts of the world and throughout history, and ends with the baptism of Jesus in the Jordan River. Adam and Eve, Moses, Adonis, Osiris, Isis, Apollo, Krishna, Buddha and Zarathustra all appear in this

sometimes astonishing retelling of the greatest story ever told. This saga is based on the Gospels and the work of spiritual researcher Rudolf Steiner and theologians Emil Bock and Edward R. Smith. The performance runs for one hour and fifteen minutes. Suggested donation: £15/£7

A **worldwide Whitsun youth festival** of The Christian Community will take place in Witten-Annen from the 7-11<sup>th</sup> June. The theme is 'PHANTASIE – creating future'. More information can be found on [www.iyfestival.org](http://www.iyfestival.org)

For **our Whitsun festival** we would love to read the beginning of John's prologue in as many languages as possible. Please contact Erhard with your offering.

The **next children's mountaineering event** will take place in Snowdonia on the weekend of 5<sup>th</sup> - 6<sup>th</sup> July. The plan is to climb Glyder Fawr, it's been our target for some time. There will be plenty of fun and pint mugs of tea in Pete's Eats to recover. Leaving after school on 4<sup>th</sup> July and returning to Stourbridge Sunday afternoon.

From the 20<sup>th</sup>-30<sup>th</sup> of July there will be a **children's camp in Forest Row** run by Aaron Mirkin and his great helper team. For more information see [www.cc-camps.org](http://www.cc-camps.org).

The **new Stroud church** is progressing well and there will be a great opening festival from Friday 18<sup>th</sup> to Sunday 20<sup>th</sup> of October, 2019 in Stroud. The Consecration of the new church will take place on Sunday morning immediately before the first Act of Consecration of Man to be celebrated in the new church. This weekend will also include the Annual Meeting of The Christian Community in GB.

Siobhán Porter and Erhard Keller

Priests' time away:

30-31/3	Erhard in Ilkeston
5-6/4	Erhard in Ilkeston
6-7/4	Siobhán in Botton/ Malton
19-22/4	Erhard in Ilkeston
28-30/4	Siobhán in Hamburg
3-4/5	Erhard in Ilkeston
4-5/5	Siobhán in Botton/ Malton
11/5	Erhard in Manchester
18-19/5	Erhard in Ilkeston
28-29/5	Siobhán and Erhard in London
31/5-1/6	Erhard in Ilkeston
8-10/6	Siobhán in Botton/ Malton
15-16/6	Erhard in Ilkeston
17-21/6	Synod in Dresden

## Gospel Readings:

### Passiontide

Sunday, March 24	...	Luke 11:14-36
Sunday, March 31	...	John 6:1-15
Sunday, April 7	...	John 8:1-12

### Holy Week

Palm Sunday, April 14	...	Matthew 21:1-11
Thursday, April 18	...	Luke 23:13-32
Friday, April 19	...	John 19:1-15
Saturday, April 20	...	John 19:16-42

### Easter

Sunday, April 21	...	Mark 16:1-8
Sunday, April 28	...	John 20:19-31
Sunday, May 5	...	John 10:1-16
Sunday, May 12	...	John 15:1-27
Sunday, May 19	...	John 16:1-33
Sunday, May 26	...	John 14:1-31

### Ascension

Thursday, May 30	...	John 16:24-33
Sunday, June 2	...	John 16:24-33

### Whitsun

Sunday, June 9	...	John 14:23-31
Wednesday, June 12		Romans 8: 5-17
Sunday, June 16	...	Romans 8: 5-17
Sunday, June 23	...	John 3: 1-21

### Office bearers:

*Council:* Rosemary Martin, Nettie Gordon, Kevin Street, Erhard Keller, Siobhán Porter, Vee Bould, Keith Williamson

*Finance Group:* Rosie Phillpot, Paul Randon, Maigread Reynolds, Doug Huntley, Erhard Keller, Siobhán Porter

*Festival Group:* Johannes Moora, Erhard Keller, Siobhán Porter

*Office:* Rosie Phillpot

*Servers Rota:* Rosemary Martin

*Vestry:* Nettie Gordon, Rosie Phillpot

*Ironing:* Kate Henderson, Rosie Phillpot

*Bread baking:* Philippa Dathan, Rosie Phillpot

*Flowers:* Kate Henderson

*Garden:* Louise Madsen

*Parents and Toddlers Group:* Janet Klaar

*Cleaning:* Ryan Walker

*Maintenance:* Maarten Ekama, Bill Warren

*Music:* Julian Gilde, Maren and Allen Stott, Joris Boon

*Books:* Erhard Keller

*Exhibitions:* Vee Bould, Erhard Keller

*Concert Preparation Group:* Kevin Street, Michael Jones, Siobhán Porter, Erhard Keller

*Room bookings:* Erhard Keller

## **For Religion lessons, Baptism, Wedding, Funeral or Sacramental**

**Consultation:** Please contact one of the priests

Rev. Siobhán Porter            07752567611 or 01384 594718

34a West Street

Stourbridge DY8 1XN

Email: [siobhan@tcc-mrr.co.uk](mailto:siobhan@tcc-mrr.co.uk)

Rev. Erhard Keller            07716229409 or 01384 395836

3 Western Road

Stourbridge DY8 3XX

Email: [erhard@tcc-mrr.co.uk](mailto:erhard@tcc-mrr.co.uk)

Rev. Louise Madsen (Emeritus) 01384 591719 (when Siobhán and Erhard are away)

Contact for Ilkeston: Daniel Bryant: [dbryant@phonecoop.coop](mailto:dbryant@phonecoop.coop)

Contact for Manchester: Claire Donoghue: [claire.donoghue@ntlworld.com](mailto:claire.donoghue@ntlworld.com)

Contact for Botton: Siobhán Porter

Contact for Malton: Bridget Holmes: [bridgetholmes@yahoo.co.uk](mailto:bridgetholmes@yahoo.co.uk)

The Christian Community owes its existence to the generous donations of its members and friends.

For details of standing orders, Gift Aid payments and legacies, please contact our honorary treasurer Rosie Phillpot.

Our bank details are:            The Christian Community

22 Baylie Street

Stourbridge DY8 1AZ

Sort code: 09 01 54

Account number: 15983908

Church office telephone number: 01384 377 190

[www.stourbridge.thechristiancommunity.co.uk](http://www.stourbridge.thechristiancommunity.co.uk)

[www.ilkeston.thechristiancommunity.co.uk](http://www.ilkeston.thechristiancommunity.co.uk)

[www.manchester.thechristiancommunity.co.uk](http://www.manchester.thechristiancommunity.co.uk)

[www.botton.thechristiancommunity.co.uk](http://www.botton.thechristiancommunity.co.uk)

[www.malton.thechristiancommunity.co.uk](http://www.malton.thechristiancommunity.co.uk)